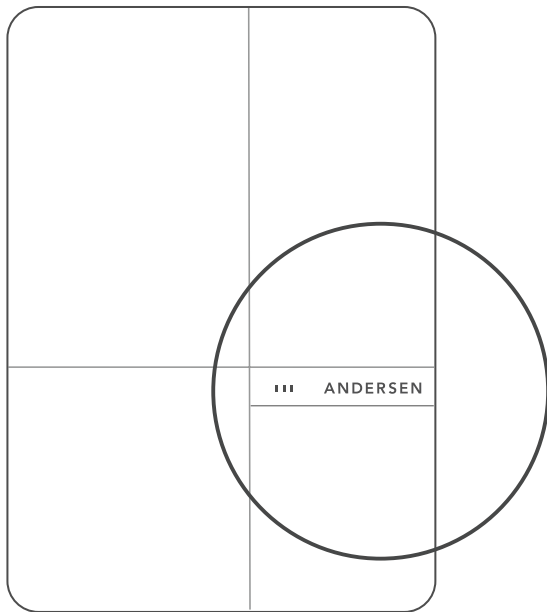


ANDERSEN

USER GUIDE PREMIUM ELECTRIC CAR CHARGEPOINTS



1 How to Start Charging

Ensure Green Power LED is on as static.



If charging state is ready, Amber and Red LEDs are turned off.

Lift lid and remove plug.

Unwind the required amount of cable from cable slot. Plug in cable to car.

If EV is connected to charger Amber LED should start blinking (Off 0,5s, On 0,5s)



When flashing Amber LED changes to solid amber, charging has begun.



2 How to End Charge

After charging has finished, Amber LED will be turned off. End vehicle charge.

Disconnect plug from car.

When flashing Amber LED changes to solid Amber and solid Green, charging has begun.



3 Scheduled Charge

If scheduled charging has enabled amber and red LED will be blinked (Off 5sec, On 5s)

Green flashing light indicates charge point is preparing to start a schedule charge. Green flashing light also indicates your vehicle has ended the charge.



Contact Us

Telephone:
+44 (0)203 865 8165

Email:
support@andersen-ev.com

ANDERSEN

USER GUIDE PREMIUM ELECTRIC CAR CHARGEPOINTS

4 LED status – normal

Chargepoint READY Status

Green LED is solid.



Chargepoint LOCKED Status

Green LED is solid. Red LED is Solid



Chargepoint EV CONNECTED Status

Green LED is solid. Amber LED Flashing



Chargepoint EV CHARGING Status

Green LED is solid. Amber LED Solid



5 LED status – error

Chargepoint DISCONNECTED Status

Green LED will blink every 5 secs if disconnected from wifi network



Chargepoint ERROR Status

Solid LED is solid. Chargepoint or Vehicle error



Chargepoint ERROR Status

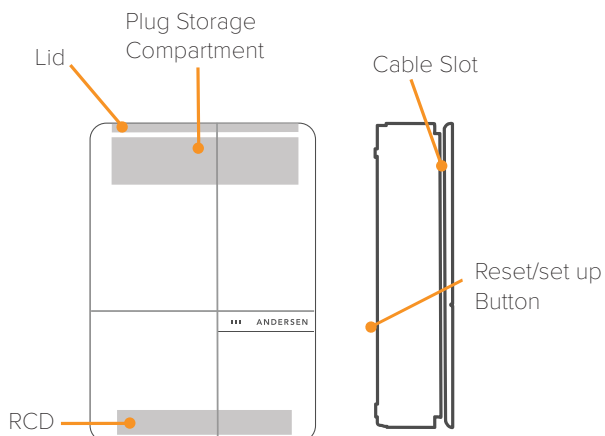
Error LED will blink every 3 secs . Voltage sag or over voltage error



6 Setting up your A2 app

Hold SETUP button for 3 secs, system will enter into a Setup configuration state.

When the system has entered into set up state, 3 LEDs will be blinking (0.5 sec on, 0.5 sec off).



ANDERSEN

USER GUIDE PREMIUM ELECTRIC CAR CHARGEPOINTS

7 Resetting your wi-fi

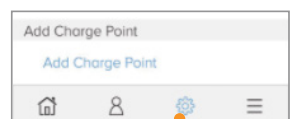
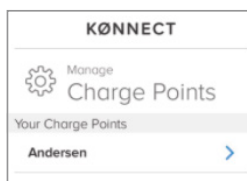
If you have changed your router or network settings you will need to reconnect your charge point to your new network. Hold SETUP button for 15 secs until all lights go off. This erases all your previously stored data and disconnects you from your current network.

Chargepoint DISCONNECTED

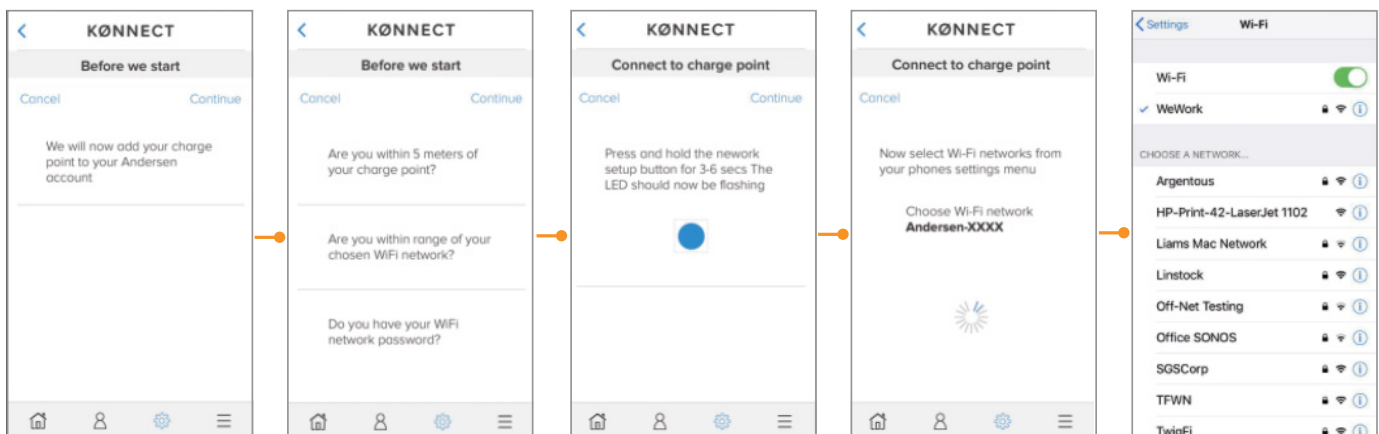
Green LED will blink every 5 secs if disconnected from the wifi network.

Now go into your app and go to settings 

Add Charge point and follow the set up steps prompted by your app.



Settings Button



Now go back into the Andersen app and select your wifi network.